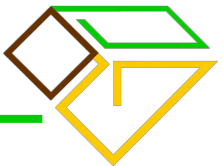




A.M. GEOCONSULT



ISO 9001:2008 CERTIFIED & ISO/IEC 17025:2005 ACCREDITED



CONTENTS

COMPANY OVERVIEW 4

SCOPE OF SERVICES 8

CLIENTS AND PROJECTS 22

STAFF AND ASSOCIATES 30

“THEE LIFT ME AND I’LL LIFT THEE AND WE’LL ASCEND TOGETHER.” -QUAKER PROVERB



ENGR. ANESIA B. BAUTISTA
Founder



ENGR. VICTOR S. ADRIANO
Chief Executive Officer

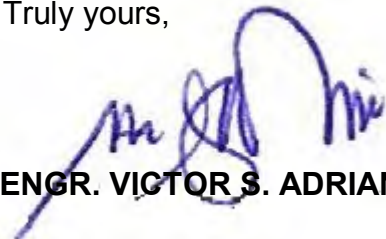
WELCOME!

On behalf of the **A.M. Geoconsult & Associates, Inc.** family, I would like to welcome you to our company!

We at A.M. Geoconsult have been enjoying a genuine, enduring, and prosperous relationship with our clients, colleagues, and suppliers for over 20 years. Through these years, we have together grown past our limits and into realizing our full potential. This is made possible by infusing a spirit of camaraderie in all our business affairs. We strongly believe that only through sincere camaraderie we are able to lift each other to greater heights. As our company enters a new era in strategic innovation, we can only guarantee all our stakeholders that the best is yet to come. Our ISO 9001:2008 certified and ISO/IEC 17025:2005 geotechnical firm experiences an unprecedented progression in all areas of the business with a more enabling management, better-quality staff, and added expert services. Significant investments in state-of-the-art drilling machines, laboratory apparatus, office equipment, and constant acquisition of the latest engineering know-how, are all priorities of our company. In the coming years, we expect to partner with more high-profile clients and enhance our visibility in other parts of the world. We have already started expanding our coverage by establishing an office in Dili, Timor-Leste registered under the business name *M.A. Geoconsult International, Unipessoal LDA*. A.M. Geoconsult ceaselessly strives toward the shining pinnacle of eminence in the engineering industry. We make certain that every company effort is a step closer to this great aspiration.

This company profile aims to provide you with all the necessary information you need to know about our company. Before you continue reading, I would like to take this opportunity to express my deepest and utmost gratitude to you my present or future business comrade – client, supplier, employee, and other stakeholder – for considering A.M. Geoconsult to become a significant part of your life. Let's ascend together!

Truly yours,



ENGR. VICTOR S. ADRIANO



COMPANY OVERVIEW

OUR MISSION

As one of the country's top engineering firms, our ultimate purpose is to lift each other to greater heights by being a genuine comrade to all our clients, suppliers, colleagues, and stakeholders.



ABOUT US

A.M. Geoconsult & Associates, established in 1990, is an ISO 9001:2008 certified and ISO/IEC 17025:2005 accredited company offering engineering consultancy and geotechnical services to multinational corporations, governments, SMEs and individuals. Our projects are in the form of roads, bridges, interchanges, tunnels, railways, airfields, seaports, shipyards, dams, and buildings. Our head office is located in Quezon City, Philippines and we have an overseas branch in Dili, Timor-Leste registered under the business name *M.A. Geoconsult International, Unipessoal LDA*.





COMPANY CULTURE

Here at **A.M. Geoconsult**, we firmly believe that underneath every successful project lies a foundation made of rock solid business relationships. This tenet emphasizes the value we place on cultivating a lifelong healthy bond with our clients, partners, and business colleagues by actually treating them as comrades. Our premise is that through sincere camaraderie, trust can easily develop, and with trust comes a genuine concern to always arrive in win-win situations. Taking this into account, we then promise our clients our genuine camaraderie and the assurance that our primary concern is to always be their most reliable partner in accomplishing all their project goals. Our company culture commands to keep this promise and uphold the integrity of our organization with all its contacts. ▶

OUR VISION

A.M. Geoconsult & Associates, with its glorious eminence in the field of engineering, is the number one choice of clients, investors, and employees in the Philippines and worldwide. We are the most reliable partner of clients providing all their required engineering services right from project conceptualization all the way to project realization. Our firm is esteemed as the foremost catalyst of urbanization and progress in the country through thousands of infrastructural, commercial, and residential developments. Our shareholder value reaches record-breaking heights owing to the company's established market leader position and unrivaled pool of resources and capabilities. We serve as the epitome of good corporate citizen for our vigorous involvement in our immediate community and profound contributions to humanity at large. The world's most brilliant and most promising professionals all assemble under our corporate umbrella, confident of a future abounding with growth, prosperity, joy and meaning. Our employees, highly influential in their respective areas of expertise, are the authoritative propellers of industry-wide revolutions, believing that the human potential to improve is infinite.



▶ As comrades, our staff is capable to communicate transparently with ease. Ideas flow freely within our organization and conflicts are speedily resolved. Every worker has a voice and is treated fairly. Our company's horizontal structure and lack of bureaucracy also empower employees to work independently but with the steadfast support of their fellow colleagues and the management. Our firm promotes cooperation and loyalty which are evident in our regular team building activities and very low employee turnover. We assist each other develop and flourish not only professionally but also personally.

Our firm's ceaseless pursuit of excellence is driven by passionate and talented staff. We understand that the leading provider of geotechnical and materials testing services is naturally the most enthusiastic in the field. Through continuous education and training, our company succeeds in preserving the zeal of its workforce and developing the skills of its engineers. We believe that in this Information Age, knowledge is unquestionably power and our knowledge workers contribute to the expansion of the company. We also acknowledge the abundant rewards that result from hard work, discipline, and fortitude. Hence, our firm makes certain that these essential attributes are embedded in the company culture and that our work atmosphere inspires employees to pour in their best effort.

As much as we strive to realize our full career potential, maintaining balance in our lives is still a priority. Our organization ensures that we always add fun to our jobs while recognizing that there exists a right time for work and a right time for play. We always look forward to special occasions such as birthdays, anniversaries, holidays, and summer vacations and make each celebration an unforgettable one. Part of celebrating our hard-earned success and living meaningful lives is sharing our gifts with the community. Our employees find a deeper sense of joy in helping. Regularly, we devote our time, talents, and money to charitable institutions, religious groups, and other philanthropic organizations.

QUALITY POLICY

Every member of the **A.M. Geoconsult** family strives for the highest grade of excellence in his or her respective work to contribute to the enhancement of the overall quality and thus, overall trustworthiness of the Company. Quality Objectives:

- a. To achieve maximum Customer satisfaction
- b. To offer superior products and services to Clients
- c. To guarantee on-time delivery of products
- d. To perfect internal processes

MILESTONES

October 1990

With a strong aspiration to progress their lives and those of others, former workmates Engr. Romulo Lumibao and Engr. Anesia Mercado instated L&M Engineering as a partnership firm. Engr. Lumibao spearheaded operations while Engr. Mercado took charge of marketing. Our start-up firm was located in Westpoint, Cubao and employed less than 5 full-time workers. With the generosity of Arch. Ruperto Gaité, L&M Engineering was able to provide basic soils investigation services using only two equipment.

April 1991

The partnership then became a corporation and Geoconsult Ltd., Inc. was established with key incorporators Engr. Edilberto Tato, Engr. Ane-

sia Mercado, Atty. Ronnie Ola, and Mr. Benigno de la Cruz. Our new venture was supported by a team of ten talented people, which included in-house geologist Engr. Vidasto Ortiz. In addition, our thriving company was able to acquire two more equipment and started hiring its own field drillers. Equipped with more assets, we confidently handled bigger and more demanding projects of prominent organizations such as *Renardet, S.A.*, *TCGI*, and *GPE*.

January 1992

Geoconsult Ltd., Inc. moved to a new office situated in New York, Cubao.

April 1994

Geoconsult Ltd., Inc. relocated to a bigger office in North Susanna, Quezon City.

The laboratory's management shall be committed to good professional practice and to the quality of its testing and calibration in servicing its customers. The laboratory's standard of service shall be world class and the purpose of the laboratory's management system is to consistently deliver this level of quality to customers for maximum customer satisfaction. All personnel concerned with testing and calibration activities within the laboratory shall familiarize themselves with the quality documentation and implement the policies and procedures in their work. The laboratory's management shall be committed to comply with the PNS ISO/IEC 17025 Standard and to continually improve the effectiveness of its management system. Finally, tests and/or calibrations shall always be carried out in accordance with stated methods and customer's requirements.



March 1995

With the remarkable leadership of Engr. Anesia Mercado, Geoconsult Ltd., Inc. was converted into a single proprietorship company. As a result, A.M. Geoconsult & Associates emerged. Our firm continued to grow by leaps and bounds. The competency of our workforce became even stronger after hiring experienced engineers in addition to a number of field employees and office staff who all worked in close collaboration to meet the needs of our similarly expanding client base. We started crossing borders, simultaneously working on a range of projects in different corners of the country.

February 1996

A new home in New Capitol Estate, Quezon City only meant a new and improved A.M. Geoconsult & Associates. Owning six powerful drilling equipment, two high-capacity trucks, and hundreds of field and laboratory tools, apparatus, and utensils, our company prospered despite the ups and downs of the Philippine economy. More geotechnical experts joined our already highly qualified team. Engineering giants *Katahira International*, *Design Science*, *Pacific Consultants International*, as well as the *Department of Public Works and Highways*, were all added to our long list of satisfied clients.

May 2001

The dawn of the new millennium also gave birth to a broad spectrum of possibilities for the company. After years of office migration, our firm settled in its wholly owned building con-

veniently located alongside Commonwealth Avenue in Quezon City. The modern-day office housed a fully equipped soils and materials laboratory and computer room. Moreover, an additional truck was purchased and our total number of drilling equipment already reached nine, exponentially increasing the production capacity of our firm. Engr. Celestino Avis became an integral part of our firm and spearheaded several new services for our valued clients while Engr. Remedios Soldao was appointed laboratory head.

February 2007

Our unwavering commitment to constantly innovate and stay ahead of our game resulted in the birth of the new generation A.M. Geoconsult. The restructured firm embodied growth in all areas of the business. A brand new website was launched along with an improved company

profile as part of the firm's fresh integrated marketing strategy. We expanded our squadron of drillers and purchased four more trucks to facilitate our ever-growing number of large-scale projects. We partnered with multi-national company Hanjin in building the world's largest shipyard facility.

December 2009

A.M. Geoconsult became truly international by establishing and maintaining a quality management system in line with the requirements of the ISO 9001:2008 Standard and by instituting its first overseas office in Dili, Timor-Leste under the business name *M.A. Geoconsult International, Unipessoal LDA*.

January 2012

A.M. Geoconsult & Associates was incorporated with Engr. Victor S. Adriano as Chief Executive Officer.

SCOPE OF SERVICES



When it comes to outstanding expertise and cost-effective solutions, **A.M. Geoconsult & Associates** is your most reliable geotechnical partner fully capable to meet and exceed every client's requirement.



A.M. Geoconsult is supported by a team of highly competent professionals who are equipped with a broad understanding of engineering concepts and who are all proven skillful through many years of industry experience. Our employees always strive for excellence in their work and we are firm advocates of continuous career development to cope up with the increasing demands of our clients.

Our staff are favored for their warm approach towards clients, partners, and business colleagues as we recognize the importance of building a strong and healthy relationship with all of the firm's contacts. We assure the highest quality geotechnical consulting services through direct involvement in every project, promoting a transparent and effective communication between the client and the firm.

Our company maintains an extensive network of first-rate consultants to fulfill other aspects of the project, making us the one-stop shop for all our clients' engineering needs. Our company is also proud to have satisfied all the requisites of various prestigious certifying and accrediting bodies such as SGS, PAO, DPWH-BRS, PhilGEPS, and PRC which all mark excellence on our brand and affirm our competitive edge over other firms. Our superior services are delivered following an ISO 9001 and 17025 framework, so Clients can expect quality comparable to international standards.

Our organization contributes to creating lucrative ventures by offering clients the lowest possible project cost without compromising the integrity of our service. Because our firm employs an efficient workforce and utilizes state-of-the-art equipment, clients benefit from our low overhead. Moreover, our proficient engineers produce accurate, detailed, and comprehensible reports to assist clients in making sound decisions, thus eliminating redundant expenses. We also make every effort to avoid any cost of delay by operating safely and systematically, and strictly meeting all deadlines.

Our business has grown over the past 20 years to become the leading provider of geotechnical and related services to a diversified group of clients, both from the private and government sectors. Our firm has completed hundreds of significant projects across different markets in government, transportation, water, energy, environment, and buildings, from local to national levels. More specifically, we have gained substantial project experience in roads, bridges, interchanges, tunnels, railways, airfields, seaports, shipyards, dams, and buildings.



CORE COMPETENCIES



GEOTECHNICAL ENGINEERING

A.M. Geoconsult engages the expertise of highly qualified Geotechnical Engineers and/or Engineering Geologists in conducting geotechnical investigations and other related studies on the physical, mechanical, and chemical properties of earth materials. Our scope of Geotechnical Engineering services is wide and involves assessing risks posed by site conditions; designing and repairing earthworks and structure foundations; and monitoring site conditions, earthworks, and foundation constructions. The trustworthiness of our recommendations, backed by intelligent engineering software, are communicated effectively in our geotechnical investigation reports, resulting in optimum foundation design, speedy construction time, increased awareness of environmental risks, and ultimately, lower costs for Clients.

Some of the engineering consultancy services we provide include:

- Airport Facilities and Pavement Studies
- Bearing Capacity Determination
- Construction Aggregate, Quarry, and Borrow Studies
- Design Options
- Drainage and Seepage Treatment
- Earth Structures, Earthwork, and Retention Systems
- Embankment Design
- Erosion Control Design
- Excavation Support System and Fill Treatment
- Foundation Analysis, Design, and Stabilization
- Geologic Engineering and Forensic Services
- Geologic Mapping
- Geophysical Survey
- Geotechnical Feasibility
- Geotechnical Investigation
- Ground Improvement
- Ground Water Control and Dewatering Systems
- Highway and Bridge Studies
- Industrial Plant Facilities
- Landslide and Slope Stability Studies
- Mechanically Stabilized Earth Walls
- Mining Studies
- Pile Capacity Analysis
- Pile Foundation Design
- Preliminary Subsurface Investigation
- Seismic Risk Analysis and Liquefaction Assessment
- Settlement and/or Expansion Magnitude and Rate Evaluation
- Soft-ground Engineering and Rock Tunnels
- Soil and Rock Stabilization
- Waterfront Structures



SURFACE AND SUBSURFACE EXPLORATION AND TESTING

As part of the geotechnical investigation package we offer, **A.M. Geoconsult** conducts surface exploration and/or subsurface exploration at project sites using advanced and sturdy equipment. Methods are carefully performed by experienced technicians in strict conformity with the client's schedule to obtain soil samples and/or various data about surface and subsurface conditions. These samples and data are then analyzed to address critical geotechnical/geological issues such as the implications of active fault location to the proposed construction, moisture content and depth of ground water, geologic history and depth of bedrock, secondary effects of liquefaction and seismic events, soil corrosivity, presence of unsuitable soils, and excavation stability.

Some of the field exploration services we conduct include:

- Test Boring and Core Drilling
- Angle Drilling
- Deep Well Drilling
- Low Clearance Drilling
- Offshore Drilling
- Electrical Resistivity and Electromagnetic Surveying
- Seismic Reflection and Refraction Profiling
- Handheld Vane Shear
- Grouting and Pressure Grouting
- Wash Boring
- Standard Penetration Test (SPT) and Split-Barrel Sampling
- Thin-Walled Tube Sampling (Undisturbed Sampling)
- Rock Core Drilling and Sampling
- Ground Water Elevation
- Test Pit Sampling
- Auger Hole Sampling
- Borrow Source Sampling
- Sampling of Aggregates



LABORATORY TESTING AND ANALYSIS

Examples of mechanical testing of soils, concrete, asphalt, aggregates, and steel that we perform include:

- Unified Soil Classification System (USCS)
- AASHTO Soil Classification
- Laboratory Determination of Moisture Content of Soils
- Liquid Limit, Plastic Limit, and Plasticity Index of Soils
- Particle Size Analysis of Soils
- Particle Size Analysis of Soils Using Hydrometer
- Specific Gravity of Soils
- Modified Proctor Test
- Standard Proctor Test
- The California Bearing Ratio Test
- Unconfined Compressive Strength of Cohesive Soils
- Unconsolidated-Undrained Triaxial Compression
- Consolidated Undrained Triaxial Compression
- Consolidated Drained Triaxial Compression
- One-Dimensional Consolidation Properties
- Direct Shear Test of Soils
- Permeability of Granular Soils
- Permeability of Fine-Grained Soils
- Moisture, Ash, and Organic Matter of Peat
- Shrinkage Factors of Soils by the Wax Method
- Sieve Analysis of Fine and Coarse Aggregates
- Unit Weight of Aggregates
- Specific Gravity and Absorption of Aggregates
- Soundness of Aggregates
- Abrasion of Coarse Aggregates
- Compressive Strength of Cylindrical Concrete Specimens
- Splitting Tensile Strength of Cylindrical Concrete Specimens
- Slump of Hydraulic-Cement Concrete



A.M. Geoconsult's ISO 17025:2005 accredited laboratory administers a series of tests on disturbed and undisturbed soil samples retrieved from subsurface exploration to measure a gamut of direct and index properties of soils. Accurate results produced by our standardized tests are required by the geotechnical engineer in preparing a reliable evaluation report. Moreover, our laboratory, supported by highly-trained personnel and well-maintained equipment, also verifies compliance of construction materials with project and quality specifications. With these services, clients are able to lessen probable material replacements, deteriorations, and/or failures and thus, save more.



PAVEMENT DESIGN AND SUBGRADE EVALUATION

A.M. Geoconsult offers pavement investigation on various streets and highways all over the Philippines to gather data on soils, hydraulics, and materials properties that are vital considerations in the construction of new pavements, and in the rehabilitation and maintenance of existing pavements. By applying appropriate engineering techniques and ensuring quality laboratory testing, the requirements for subgrade preparation and compaction, for base materials thickness and type, and for concrete/asphalt paving sections thickness are all correctly determined and assist in producing clever, robust, and economical pavement facilities. In addition, our engineers combine expert knowledge with lengthy experience to provide sound judgments regarding pavement evaluation and maintenance, and propose optimum repair solutions that yield the greatest long-term benefit and highest return to the client.



CONCRETE CORING

DCPT

IN-SITU TESTING AND PERFORMANCE MONITORING



A.M. Geoconsult serves the special testing and monitoring needs of clients by providing cutting-edge technology and expert manpower, capable of speedy deployment for quick delivery of required information. We utilize only calibrated equipment and validated programs in the performance of field services and in the processing of data so that clients can be confident of the dependability of our test reports. Competent engineers analyse and interpret results and provide intelligible advice on slope stability, landslides, settlement, retaining structures, tunnels, and other testing and monitoring concerns. Subsequent technical queries are accommodated by dedicated personnel who are also available to perform retests when necessary and to assist clients in overcoming engineering challenges. Our company is also proficient in pooling resources for clients requiring customized services.

FIELD BOOK

Project Name: NORTH LUZON EXPRESSWAY PROJECT, P...
 Project Location: MAJABON
 Client: MANILA NORTH TOLLWAY CORPORATION
 Client's Address: UNIT 9006 ONEW SQUARE EMERALD B...
 Consultant: SMPC INT'L. PTY. LTD.

Sampling Location: BRGY TINA-IBROS, GOV. PASCUAL MA...
 Date of Sampling: JUNE 04, 2010 P/F: JUNE 08, 2010
 Site Topography: FLAT
 Weather Condition: CLOUDY/RAINY
 Coordinates: N = 1622757.963 E = 496905.427
 Station: STA. 7+726 R/S

| DEPTH (m) | SAMPLING DEPTH (m) | SAMPLE ID | TYPE OF SAMPLING | REC. (cm) | ROD (%) | SPT BLOWS | | | N-VALUE |
|-----------|--------------------|-----------|------------------|-----------|---------|-----------|-------|-------|---------|
| | | | | | | 15 cm | 15 cm | 15 cm | |
| | 1.05 | WB1 | | 67 | | | | | |
| 1.50 | 1.50 | SS1 | | 30 | | 7 | 5 | 5 | 13 |
| | 2.55 | WB2 | | 100 | | | | | |
| 3.00 | 3.00 | SS2 | | 45 | | 20 | 22 | 21 | 43 |
| | 4.65 | WB3 | | 100 | | | | | |
| 4.50 | 4.50 | SS3 | | 45 | | 18 | 21 | 27 | 48 |
| | 5.55 | WB4 | | 100 | | | | | |
| 6.00 | 6.00 | SS4 | | 45 | | 16 | 16 | 18 | 34 |
| | 7.05 | WB5 | | 100 | | | | | |
| 7.50 | 7.50 | SS5 | | 45 | | 22 | 28 | 30 | 58 |
| | 8.55 | WB6 | | 100 | | | | | |
| 9.00 | 9.00 | SS6 | | 45 | | 27 | 29 | 42 | 71 |
| | 10.05 | WB7 | | 71 | | | | | |
| 10.50 | 10.50 | SS7 | | 33 | | 16 | 20 | 32 | 52 |
| | 11.55 | WB8 | | 56 | | | | | |
| 12.00 | 12.00 | SS8 | | 25 | | 18 | 26 | 31 | 56 |
| | 13.05 | WB9 | | 47 | | | | | |
| 13.50 | 13.50 | SS9 | | 21 | | 21 | 33 | 34 | 72 |
| | 16.55 | WB10 | | 56 | | | | | |
| 15.00 | 15.00 | SS10 | | 25 | | 23 | 29 | 33 | 62 |
| | 16.05 | WB11 | | 60 | | | | | |
| 16.50 | 16.50 | SS11 | | 27 | | 27 | 33 | 40 | 73 |
| | 17.65 | WB12 | | 34 | | | | | |
| 17.90 | 17.90 | SS12 | | 12 | | 38 | 41 | 50/5 | 91/20 |
| | 19.05 | WB13 | | 39 | | | | | |
| 19.35 | 19.35 | SS13 | | 13 | | 35 | 40 | 50/3 | 90/15 |
| | 20.55 | WB14 | | 91 | | | | | |
| 20.77 | 20.77 | SS14 | | 20 | | 35 | 50/7 | - | 50/2 |



FIELD DENSITY TEST



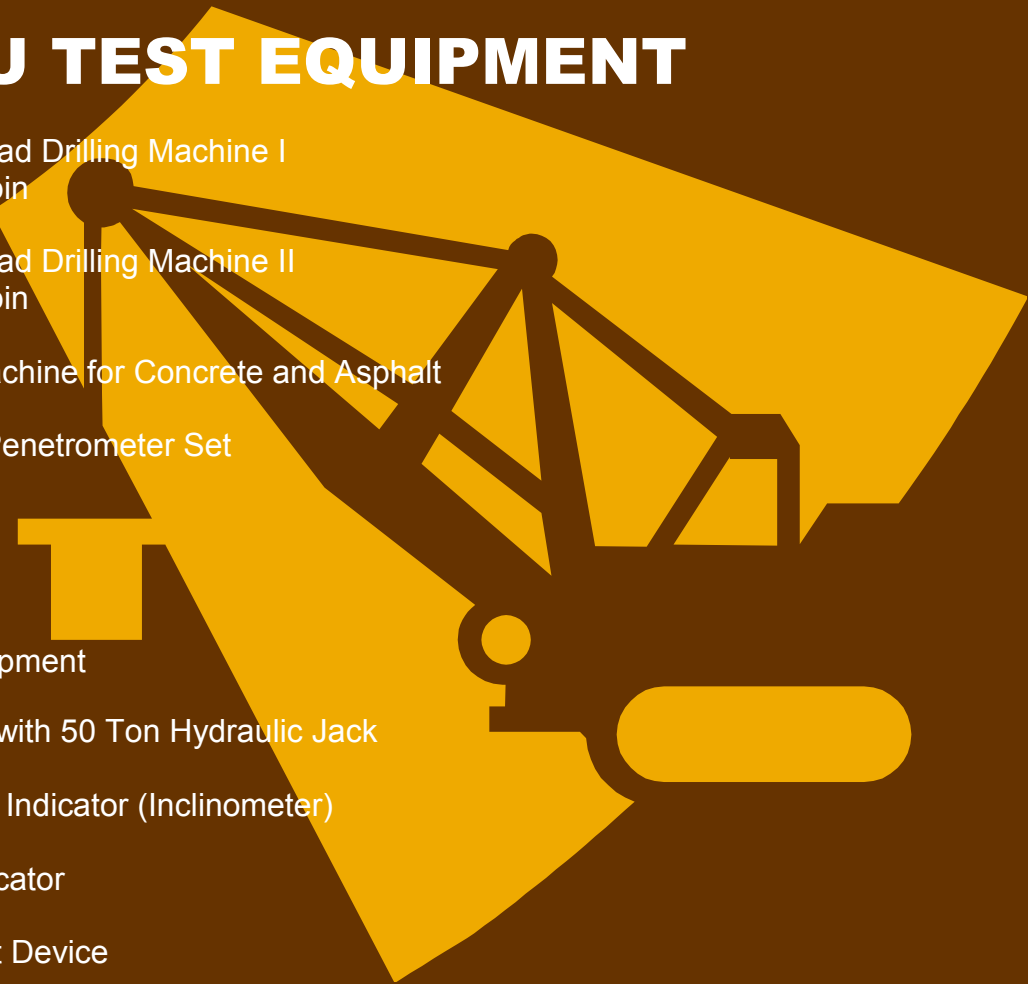
REBOUND HAMMER TEST



INCLINOMETER

DRILLING MACHINES & IN-SITU TEST EQUIPMENT

- Long Year 38 Drilling Machine
Powered by Yanmar
- Long Year 24 Drilling Machine #18286
- OE2 Hydraulic Drilling Machine
Powered by Yanmar NS#D67544
- YBM Drilling Machine MDL-YSO-3 with Cathead,
Hydraulic Retraction, Skid Mounted, Belt Driven by
New Yanmar Single Cylinder TF-120
- YBM I Hydraulic Drilling Machine
Powered by Yanmar TS 13
- YBM II Hydraulic Drilling Machine #2223
Powered by Yanmar TS 13
- YBM III Hydraulic Drilling Machine #2170
Powered by Yanmar TS 13
- YBM IV Hydraulic Drilling Machine #3083
Powered by Yanmar TS 13
- Koken Hydraulic Drilling Machine MDL-SD38
Powered by Yanmar TS 13
- Koken Hydraulic Drilling Machine #200995
Powered by Yanmar NS 13
- FC3 Portable Hydraulic Drilling Machine
Powered by Lombardini Power Rotator
- Motorized Cathead Drilling Machine I
Powered by Robin
- Motorized Cathead Drilling Machine II
Powered by Robin
- Prime Coring Machine for Concrete and Asphalt
- Dynamic Cone Penetrometer Set
- Auger Drill Set
- Hand Auger Set
- Sand-Cone Equipment
- Plate Load Test with 50 Ton Hydraulic Jack
- Slope Inclination Indicator (Inclinometer)
- Water Level Indicator
- Vane Shear Test Device



BW/NW/HW/PW Casing 10 ft.
BW/NW/HW/PW Casing 5 ft.
BW/NW/HW Casing 4 ft.
BW/NW/HW Casing 3 ft.
BW/NW/HW Casing 2 ft.
BW/NW/HW Casing 1 ft.

BW/NW/HW/PW Casing Head
BW/NW/HW/PW Casing Shoe Bit (Carbide)
BW/NW/HW/PW Casing Shoe Bit (Diamond)
BW/NW Chopping Bit
BW/NW Drive Shoe

BQ/NQ//HQ/PQ Core Bit (Carbide)
BQ/NQ//HQ/PQ Core Bit (Diamond)
BQ/NQ//HQ/PQ Reamer Shell
BQ/NQ//HQ/PQ Reamer Shell (Diamond)
BQ/NQ//HQ/PQ Shelby Head
BQ/NQ Shelby Tube

BQ/NQ//HQ/PQ Core Lifter
BQ/NQ//HQ/PQ Core Barrel
BQ/NQ//HQ/PQ Core Catcher
BQ/NQ//HQ/PQ SPT Catcher

AW Rod 10 ft.
AW Rod 5 ft.
AW Rod 4 ft.
AW Rod 3 ft.
AW Rod 2 ft.
AW Rod 1 ft.

NQ Rod 10 ft.
NQ Rod 5 ft.
NQ Rod 4 ft.
NQ Rod 3 ft.
NQ Rod 2 ft.
NQ Rod 1 ft.

Concrete Coring Bit 6" diam.
Concrete Coring Bit 4" diam.
Water Swivel
Jar Hammer Assembly
Tripod Assembly

Ford Sedan
Hyundai Van
Isuzu Dropside Trucks
Isuzu Pick-up Trucks
Kia Aluminum Van
Mitsubishi Dropside Trucks
Mitsubishi Passenger Van
Mazda Pick-up Truck
Toyota Sedan
Toyota SUV



FIELD TOOLS AND VEHICLES



Most of our firm's consultancy projects on Detailed Engineering and Construction Supervision in the Philippines, the necessary road and topography surveys, and Geotechnical Investigations are carried out by A.M. Geoconsult. Invariably, all our engineering designs have been appropriate and readily accepted by our satisfied clients because we have used your accurate and timely survey outputs, and especially your findings on Soil Investigations. Indeed, we are very pleased to have your outfit, as our dependable and very capable partner in the construction industry.

Engr. Hiroshi Shindo, Project Director, Katahira Engineers International

LABORATORY WORKSHEET

SPANISH GOVT. FINANCING REGION VI, VIII

Project Reference #: 1004 PTCI
 Location: ST. ARTIGAS CENTER CITY
 Pit #: BH-1
 Depth (m): SS-1
 Test Depth (m): 1.05 - 1.50 M
 Test Can ID: PC
 Reference Can ID: PC
 Analysis Can ID: CI/19.80

TEST RESULTS OF SOILS

Figure 1. Flow Curve



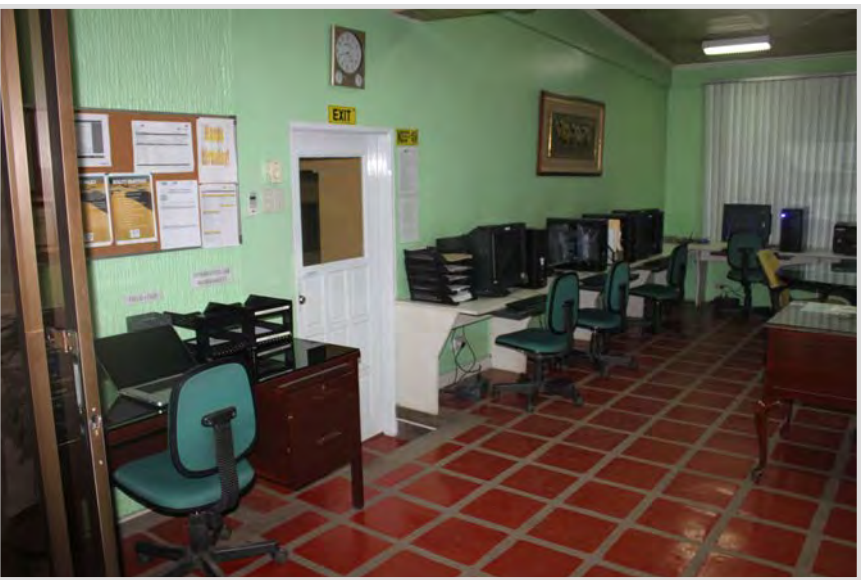
MOISTURE CONTENT OF SOILS

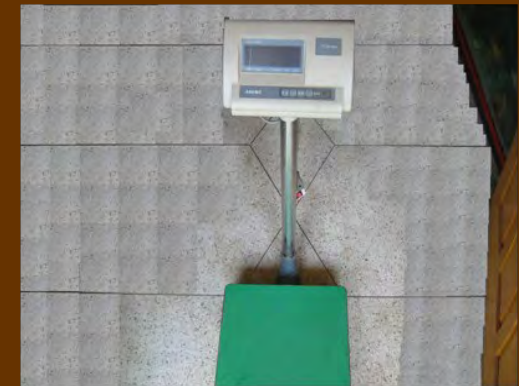
| | |
|------------------------|---------------|
| Wet Soil + Can (g): | <u>261.43</u> |
| Dry Soil + Can (g): | <u>186.46</u> |
| Mass of Can (g): | <u>21.59</u> |
| Moisture Loss (g): | <u>54.97</u> |
| Original Dry Mass (g): | <u>124.87</u> |
| Moisture Content (%): | <u>44.62</u> |

SUMMARY OF RESULTS

| | |
|-----------------------|--------------|
| Moisture Content (%): | <u>44.62</u> |
| Liquid Limit (%): | <u>57</u> |
| Plastic Limit (%): | <u>36</u> |
| Plasticity Index (%): | <u>21</u> |
| Specific Gravity: | <u>2.69</u> |
| USCS/AASHTO Symbol: | <u>MH</u> |

Soil Description: PALE BROWN SANDY ELASTIC SILT (MH)



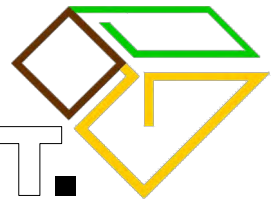


EQUIPMENT, APPARATUS, AND ACCESSORIES



1. Compression-Tension Tester (Universal Testing Machine) Controls, 500 KN Tension, 1000 KN Compression
2. Hammer Compaction Assembly
3. Centrifuge Extractor 1500 g Capacity
4. L.A. Abrasion Machine
5. Marshall Machine
6. Ovens
7. Digital Balances
8. Top Loading Balance
9. Motorized Sieve Shaker
10. Sieves
11. Wet Washing Sieve
12. Liquid Limit Devices (Manual & Motorized)
13. Vernier Caliper and Digital Caliper
14. Digital Timer, Thermohygrometer, & Digital Thermometer
15. Stirring Apparatus
16. FDT Sand Cones
17. Speedy Moisture Tester

WORLD-CLASS LABORATORY, QUALITY SERVICES.



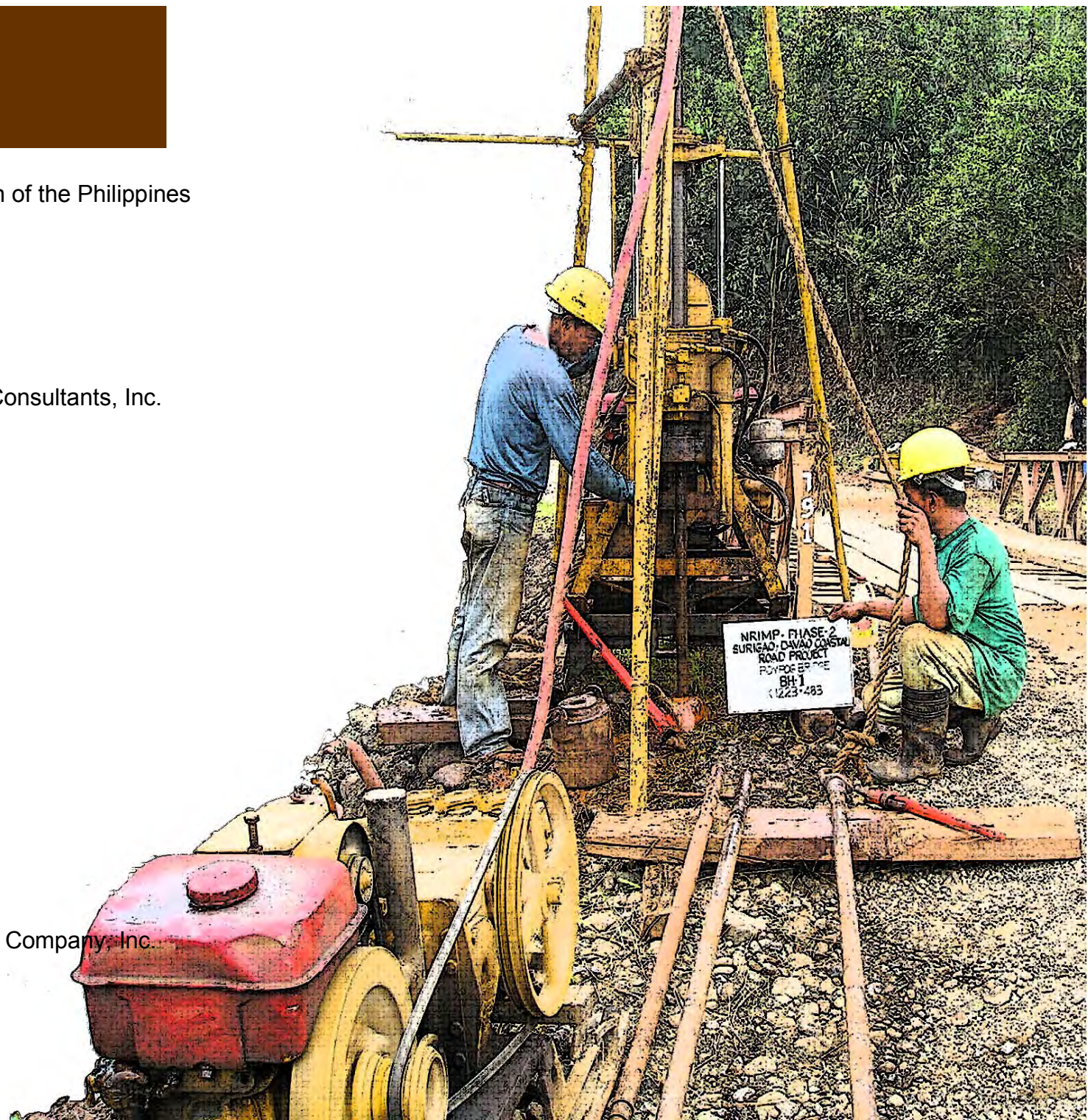
CLIENTS AND PROJECTS

Department of Environment and Natural Resources
Department of Public Works & Highways
Department of Transportation and Communication
DMJM International
GHD Pty Ltd.
Halcrow , Inc.
Hanjin Heavy Industries & Construction Co., Ltd.
Intercontinental Consultants and Technocrats, Ltd.
Japan Overseas Consultants Co., Ltd.
Katahira & Engineers International
Katahira Asia
Kawasaki Corporation
Louis Berger International, Inc.
Makati Development Corporation
Metro Manila Development Authority
Mitsubishi Heavy Industries, Ltd.
MTD Construction Sdn Bhd
Nippon Koei Co., Ltd.
Pertconsult International
Pilipinas Shell Petroleum
Pioneer Hi-Bred Philippines, Inc.
Prudential Group
Renardet S.A.
San Miguel Food Corporation
Scottwilson Kirkpatrick – Malaysia
Snowy Mountains Engineering Corporation (SMEC)
TOYO Construction Co., Inc.
University of the Philippines

A&A Geoinformatics Corp.
ADI Limited, Inc.
AGS Management Resources, Inc.
Aina Construction
Asian Construction and Development Corporation
A.M. Paragas & Brothers Construction & Surveying
Ambit Trading and Technical Services, Inc.
ARREM Industries, Inc.
Charifer Builders
Codes Construction
Construction & Drilling Specialist, Inc.
CORD Chemical
CP Casecan Consortium
DCCD Engineering Corporation
DDT Konstruct, Inc.
DEMCOR, Inc.
Department of Agriculture
Department of Education
Department of Interior and Local Government
Department of Justice
Design Science, Inc.
Development Consultant Company
Development of Environmental System, Inc.
DF Sandejas & Associates
Doña Trinidad Mendoza Institute
Dynamic Planners and Development Corporation
E.H. Sison & Associates



Engineering & Development Corporation of the Philippines
Filipinas Dravo Corporation
Gampik Construction & Development
Grandi Lavori Fincosit, Inc. (GLF-SELI)
Ground Test Construction Corp.
GPE Resource Consultants & Company
Heuristics Technology & Management Consultants, Inc.
Hi-Cement Corporation
ICCP Land Management, Inc.
Integrated Philconsult, Inc.
Interstructure System, Inc.
J.M. Raposas Construction Corporation
LANDCO Technical Services, Inc.
Las Piñas City Engineers Office
Leandro V. Locsin & Partners
Marquez & Son's Construction, Inc.
Marquez Construction
MCSI Konsult, Inc.
Monasterio de Sta. Clara
National Housing Authority
Orica Philippines, Inc.
Pacific Consultants International
Pacific-Orient Consultants/Management Company, Inc.
Parson's Brinckerhoff Phil., Inc.
Perk Technical Corp.
Philipp's Technical Consultants Corp.
Philippine Investment Management, Inc.



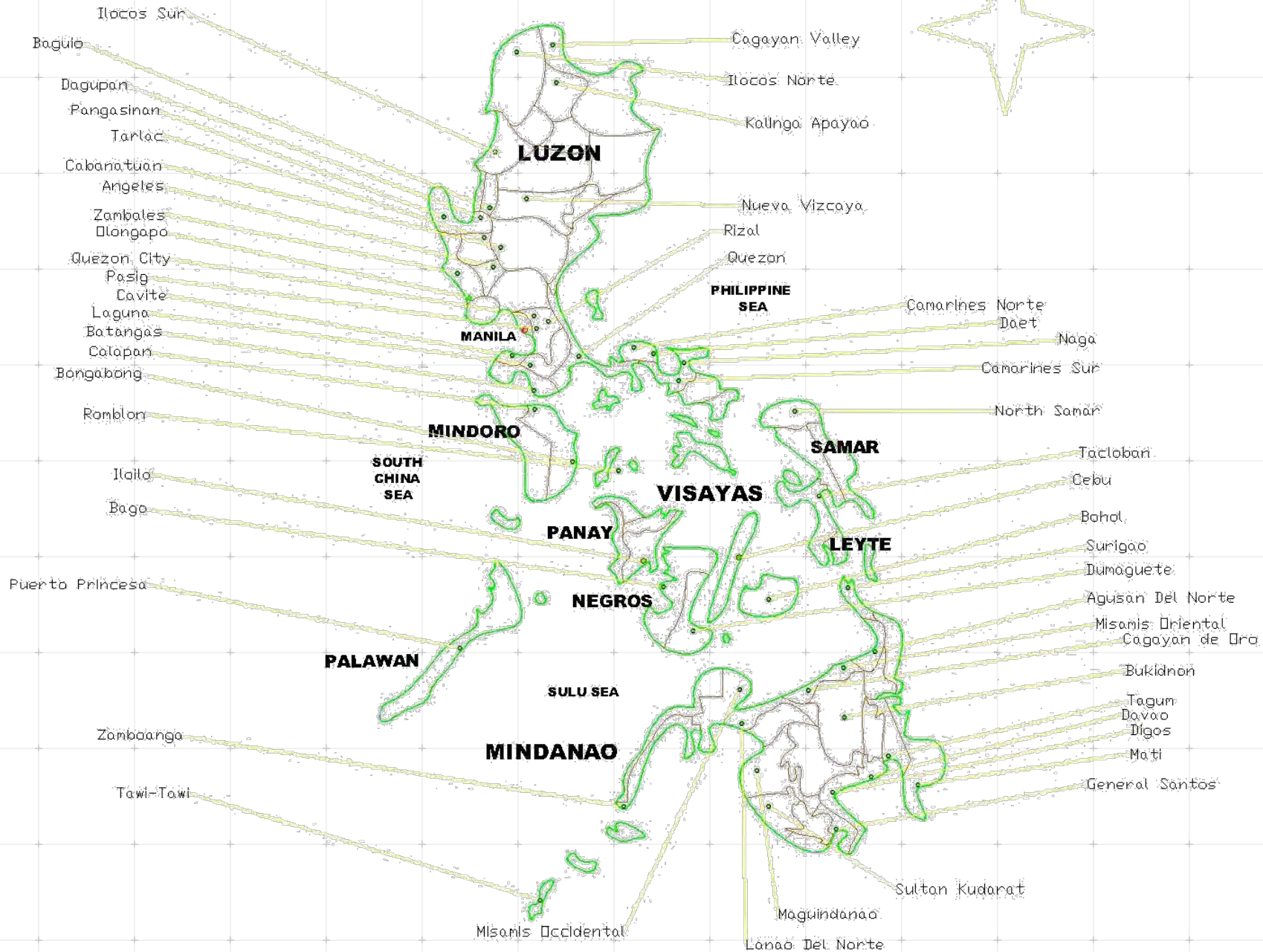
We have witnessed A.M. Geoconsult evolve over the last decade. They have become increasingly expert in their field as they gained more experience working in different types of projects. In addition, we remain loyal clients for many years because they always offer us the lowest project costs. We are also satisfied with their effective delivery of service outputs, particularly the reports that are always carefully prepared. It is easy dealing with the engineers since they never fail to put our interests first.

***Dr. Michelle Colangelo
President for Asia Pacific, Renardet, S.A.***

Philippine Normal University
Philkoei International, Inc.
Phinma Corporation
PIDCO
Prime Research Corporation
Prime State Ventures, Inc.
Rizal Provincial Government
SBF Construction
Schema Konsult, Inc.
Shinsung Corporation
Simplex Machineries, Inc.
Social Homes, Inc.
Soiltech Engineering Co., Ltd.
Stages Design & Construction Corp.
Sunshine Motors Corporation
Suntrak Corporation
TCGI Engineers
Techniks Group Corporation
Tecphil, Inc.
Tests Consultants International
The Church of Jesus Christ of the Latter-Day Saints
Tracsom Builders, Inc.
UNI-7 Contractor Corp.
United Power System Philippines Incorporated
Urban Integrated Consultants, Inc.
VINHAR Construction
Winsway Energy Co., Ltd., Phils.

GEOGRAPHIC COVERAGE

MAP OF THE PHILIPPINES





ROADS, BRIDGES, INTERCHANGES, TUNNELS, RAILWAYS,

Geotechnical Investigation Works for National Roads Improvement
and Management Project (NRIMP)
Nationwide

Tarlac-Pangasinan-La Union Toll Expressway Project (TLUTE &
TPLEX)
Route Connecting Tarlac, Pangasinan, and La Union Provinces

Proposed HHIC-Philippines Subic Shipyard Facility Project
Subic, Zambales

Allacapan-Aritao Road Rehabilitation Project
Luzon Area

Rural Roads Network Development Project (RRNDP)
Nationwide





Subic-Clark-Tarlac Expressway Project (SCTEX)
Route Connecting Subic, Clark, and Tarlac

BIIPS-CO2b Road Infrastructure Surveys
Nationwide

Central Mindanao Road Project (Package III)
Maguindanao/Sultan Kudarat Boundary-Lesbak-Kalamansig Roads

Cebu North Coastal Road Project
Mandaue City, Cebu

Panguil Bay Bridge
Misamis Occidental and Lanao del Norte Provinces

Davao International Airport Project
Davao City, Davao

ADB Road Improvement Project
Nationwide

DPWH Bridge Construction/Replacement Project Under Spanish
Government Financing
Luzon and Visayas

North Luzon Expressway Project Phase 2 Segment 10
Metro Manila

Preliminary and Detailed Engineering of Dinalupihan-Hermosa-Lubao
Flood Control Projects
Bataan and Pampanga



Southern Samar Coastal Road Project (Package III)
Southern Samar Region

UK-Assisted President's Bridge Project Under the DPWH Bridge Replacement Program
Samar and Leyte Provinces

Subic Bay Freeport Central Business District Development Master Plan Project
Subic Bay, Olongapo

Metro Manila Air Quality Improvement Sector Development Program, 57 kms. Urban Road Project
Metro Manila

Detailed Engineering Design and Construction Supervision of Baguio-Aritao Road Improvement Project Under the Cordillera Road Improvement Project
Northern Luzon Region

Geotechnical Services for the Review of Engineering Design of Bohol Circumferential Road Improvement Project Under the Arterial Road Link Development Project (Package IV)
Province of Bohol

Catarman-Calbayog via Lope de Vega Improvement Project
Northern Samar Region

Subsurface Exploration of Eleven (11) Bridges in Albay and Camarines Sur, Masbate and Sorsogon
Albay, Camarines Sur, Masbate, and Sorsogon Provinces

Geotechnical Investigation Works for South Luzon Expressway Project (SLEX)
South Luzon Region

Widening of Gapan-San Fernando-Olongapo Road, Dolores Flyover-Sta. Cruz Bridge Section and Emergency Dredging Project
Province of Pampanga

Laguindingan Airport Development Project
Province of Misamis Oriental



Geotechnical Investigation Works for the Detailed Engineering Design of Priority Highways Project (SONA Project)

Abo-abo Brookes Point Road Section, Palawan

Geotechnical Investigation Works for the Detailed Feasibility Studies and Preliminary Engineering Design of Selected Medium-Term Public Investment Program (MTPIP) Based Road Projects (Visayas Package)

Visayas Area

Geotechnical Investigation Works for the Construction of Bacolod Airport Access Road Project

Province of Bacolod

Austrian-Assisted DPWH Bridge Construction and Replacement Project

Province of Aurora

Rosario-Pugo-Baguio Road Rehabilitation Project

Route to Rosario, Pugo, and Baguio

San Juanico Bridge Rehabilitation Project

San Juanico, Tacloban

Cagayan de Oro-Iligan-Corrigidor Laguindingan Airport Project

Laguindingan, Misamis Oriental

Manila-Clark Rapid Railway Project

Caloocan-Fort Bonifacio Section

The Basic Design Study on the Project for Construction of Community Bridges for Agrarian Reform in Northern Luzon

Northern Luzon Region

Metro Manila Urban Road Transport Integration Project (MMURTRIP)

Metro Manila



STAFF & ASSOCIATES

KEY PERSONNEL

Engr. Victor S. Adriano
Chief Executive Officer

Mr. Adonil Ian B. Santiagu
Executive Vice President

Mr. Alodin Ain B. Santiagu
Quality Management Representative

Engr. Remedios O. Soldao
Head of Engineering Department

Ms. Maribel N. Podador
Head of Administration Department

Capt. Walter B. Mercado
Country Director - East Timor



CONSULTANTS

Alexis A. Acasio
Ph.D. in Geotechnical Engineering
University of Tokyo, Japan

Mark Albert H. Zarco
Ph.D. in Geotechnical Engineering
Virginia State University, USA

Brian B. Tan
M.S. in Geotechnical Engineering
Massachusetts Institute of Technology (MIT), Cambridge

Emmanuel A. Vargas
M.S. in Engineering (Soils)
Asian Institute of Technology, Thailand

Roy Anthony C. Luna
M.S. in Geotechnical Engineering
University of the Philippines, Diliman

Celestino C. Avis
M.S. in Geotechnical Engineering
Mapua Institute of Technology, Philippines

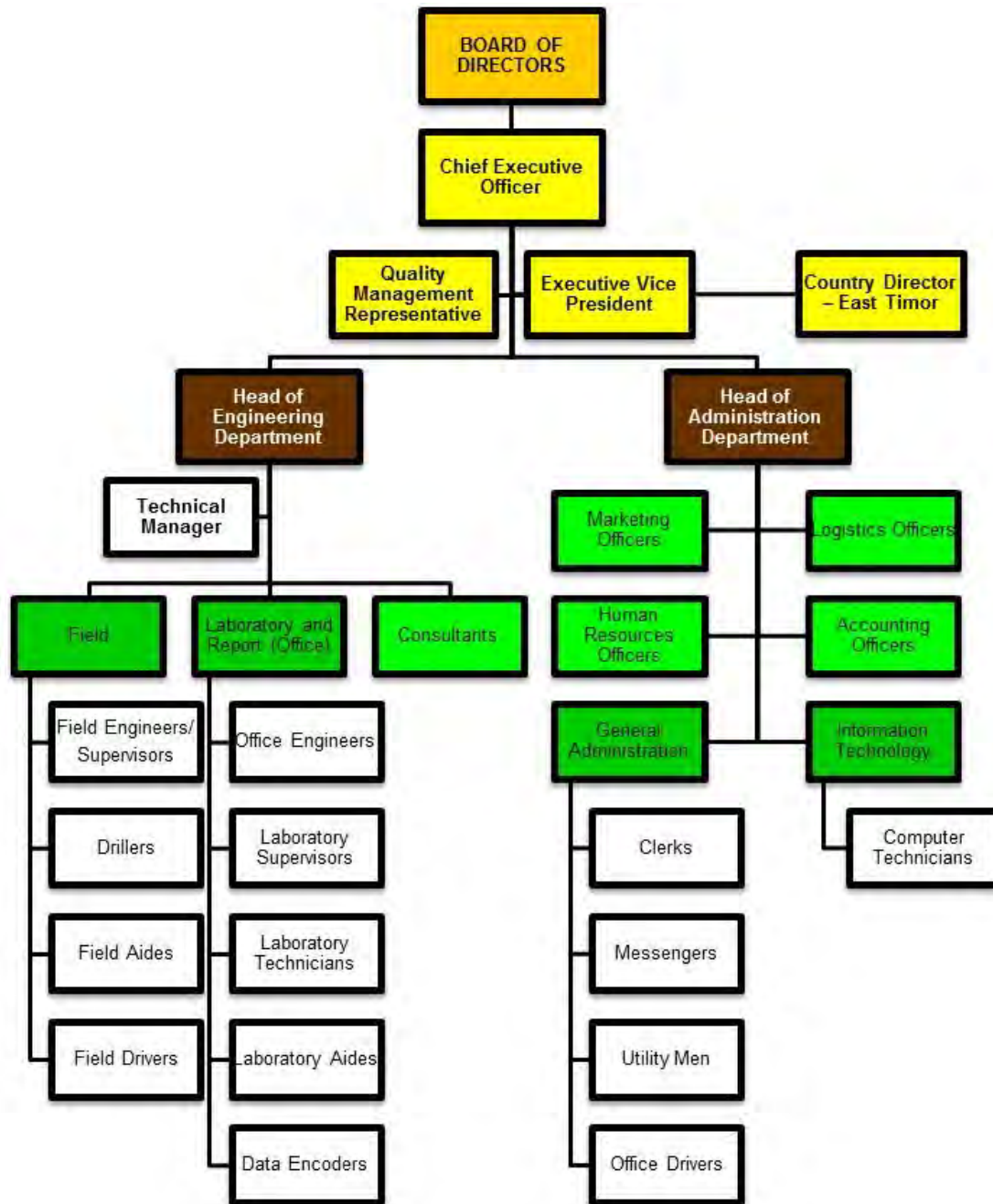
Ramon D. Quebral
Ph.D. in Geology
Université Pierre et Marie Curie, France

Carlo D. Dayanghirang
M.S. in Quaternary Engineering
University of Brussels, Belgium

Reynaldo P. Cruz
Ph.D. in Environmental Science (Candidate)
University of the Philippines, Diliman



ORGANIZATION CHART



MEMBERSHIPS/CERTIFICATIONS/ACCREDITATIONS



American Society of Civil Engineers



Confederation of Filipino Consulting Organizations



Council of Filipino Consultants



Department of Public Works & Highways
Bureau of Research & Standards



Road Engineering Association of Asia & Australasia



Road Engineering Association
of the Philippines



Philippine Institute of Civil Engineers



Society of American Military Engineers



Society of Philippine Accredited
Consultants



ISO 9001:2008



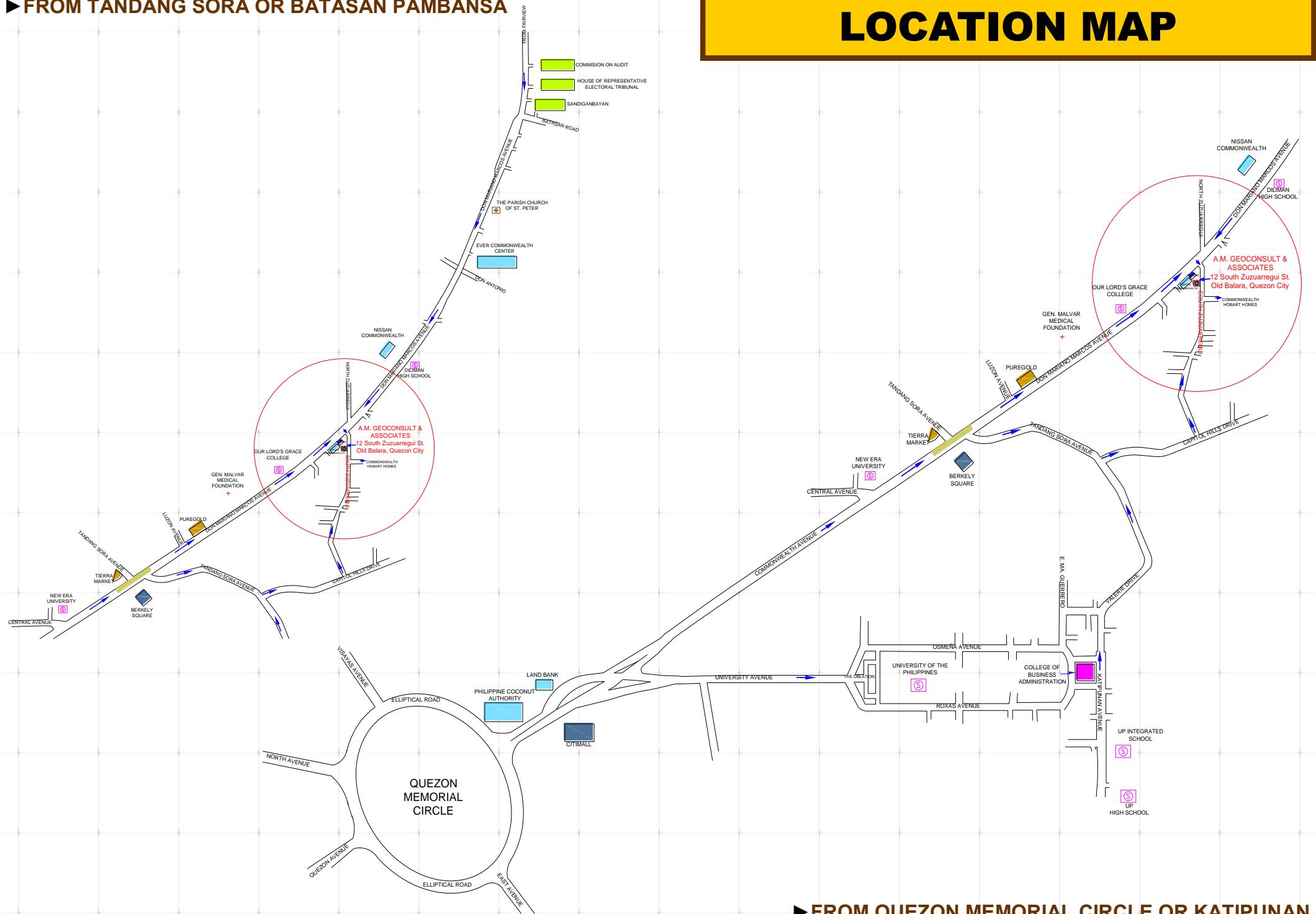
Philippine Government Electronic
Procurement Service



Professional Regulation Commission

► FROM TANDANG SORA OR BATASAN PAMBANSA

LOCATION MAP



► FROM QUEZON MEMORIAL CIRCLE OR KATIPUNAN



CAMARADERIE.



CONTACTS

#12 South Zuzuarregui Street
Old Balara, Quezon City 1119
Philippines

TELEFAX

+63(2) 931-8883
+63(2) 932-9585

Paol, Lahane
Dili, Timor-Leste

TELEPHONE

+670 331-3242
+670 776-7328

www.amgeoconsult.com
www.facebook.com/amgeoconsult

General Inquiries: www.amgeoconsult.com/contacts.html
New Business: www.amgeoconsult.com/newbusiness.html
Careers: www.amgeoconsult.com/careers.html

Engineering: engineering@amgeoconsult.com
Administration: admin@amgeoconsult.com
Purchasing: purchasing@amgeoconsult.com
Feedback: feedback@amgeoconsult.com

Yahoo! Messenger: amgeoconsult@yahoo.com.ph
Skype: amgeoconsult



The content of this company profile is copyright © 2012 A.M. Geoconsult & Associates. All rights reserved. Content should not be copied, altered, divulged or reproduced, in full or in part, without prior consent from the company. **Last updated:** April 3, 2012

NOTES:

